



KinematX[®]

Total Wrist Arthroplasty

Get Real

Anatomic range of motion,
engineered to go the distance.

Midcarpal Articulation X Modular Assembly X Natural Range of Motion

Exponential Impact

EXTREMITY[®]
MEDICAL

Real change *starts* here™

KinematX[®]

Total Wrist Arthroplasty

Get Real Advanced Total Wrist Replacement Technology

KinematX by Design

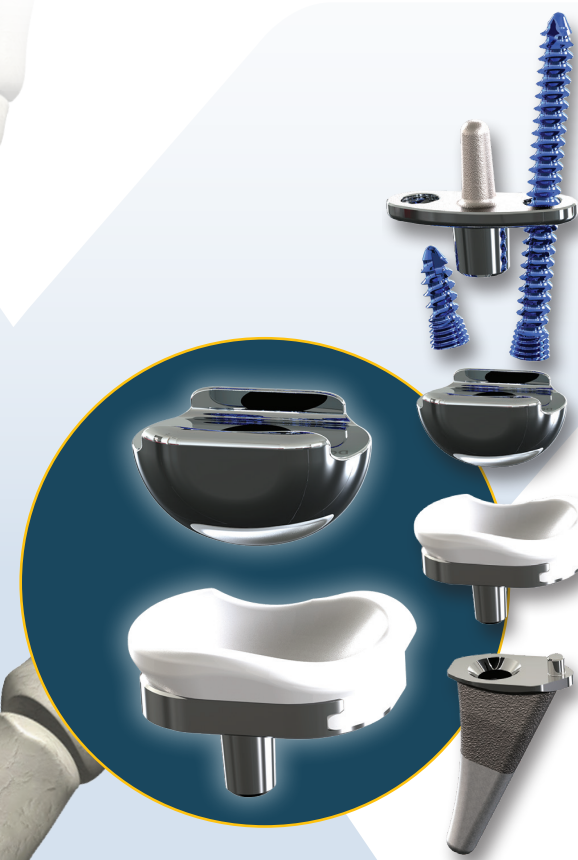
- Restores the midcarpal joint, preserving natural center of rotation
- Enables natural dart thrower's motion and other coupled motions of the wrist that are instrumental in throwing, pouring, hammering and other occupational and recreational activities.

A revolutionary total wrist implant engineered for optimal kinematics.

COR

Benefits of Midcarpal over Radial-Centric Articulation

- Alleviates excess distal stress, lowering the risk of carpal component failure
- Novel double flange capitate cap maximizes flexion-extension arc
- Radial Tray emulates the proximal row of the carpus
- Preserves radial length



Engineered for Modular Precision

Component sizing options provide improved anatomic fit, improved soft tissue tensioning, and simple in situ revisions.

- Unique modular design allows safe and easy system disassembly and revision if needed.
- Articular tray and carpal cap can be replaced in situ without removing the radial stem
- Metal convex articulation surface designed to reduce polyethylene load, polyethylene wear debris, osteolysis and loosening
- Narrow radial-ulnar footprint designed to eliminate radial impingement

Enhanced Radial and Distal Fixation

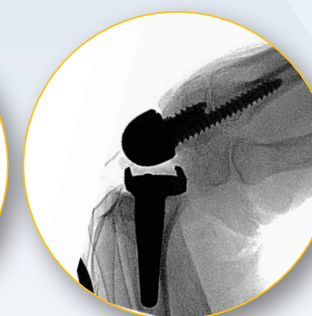
Designed with an anatomic COR, compared to a more distal COR in competitive devices, which decreases lever arm force on the components.

- Maximizes purchase and stability through three points of distal fixation
- Decreases risk of carpal component loosening
- Decreases stress at the bone-implant interface

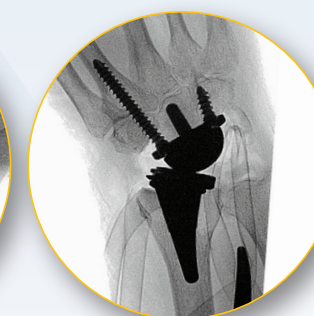
Significant improvements in all 4 directions of ROM at 1 year*.



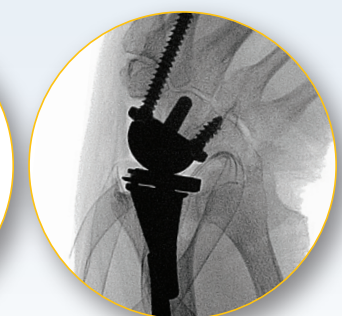
Extension
47°



Flexion
46°



Radial Deviation
11°



Ulnar Deviation
31°

* Average ROM 1-year post-op (n=7), p<0.05.
The KinematX Midcarpal Total Wrist Arthroplasty: A Multicenter Prospective Registry of Clinical and Patient-Reported Outcomes. Data on file.

KinematX[®]

Total Wrist Arthroplasty

Delivering
a smarter approach in total wrist
Period.

Real change ***starts*** here[™]

EXTREMITY[®]
MEDICAL

Real change ***starts*** here[™]

888.499.0079

973.588.8980

ExtremityMedical.com

customerservice@ExtremityMedical.com

300 Interpace Parkway, Building A, Floor 2 | Parsippany, NJ 07054